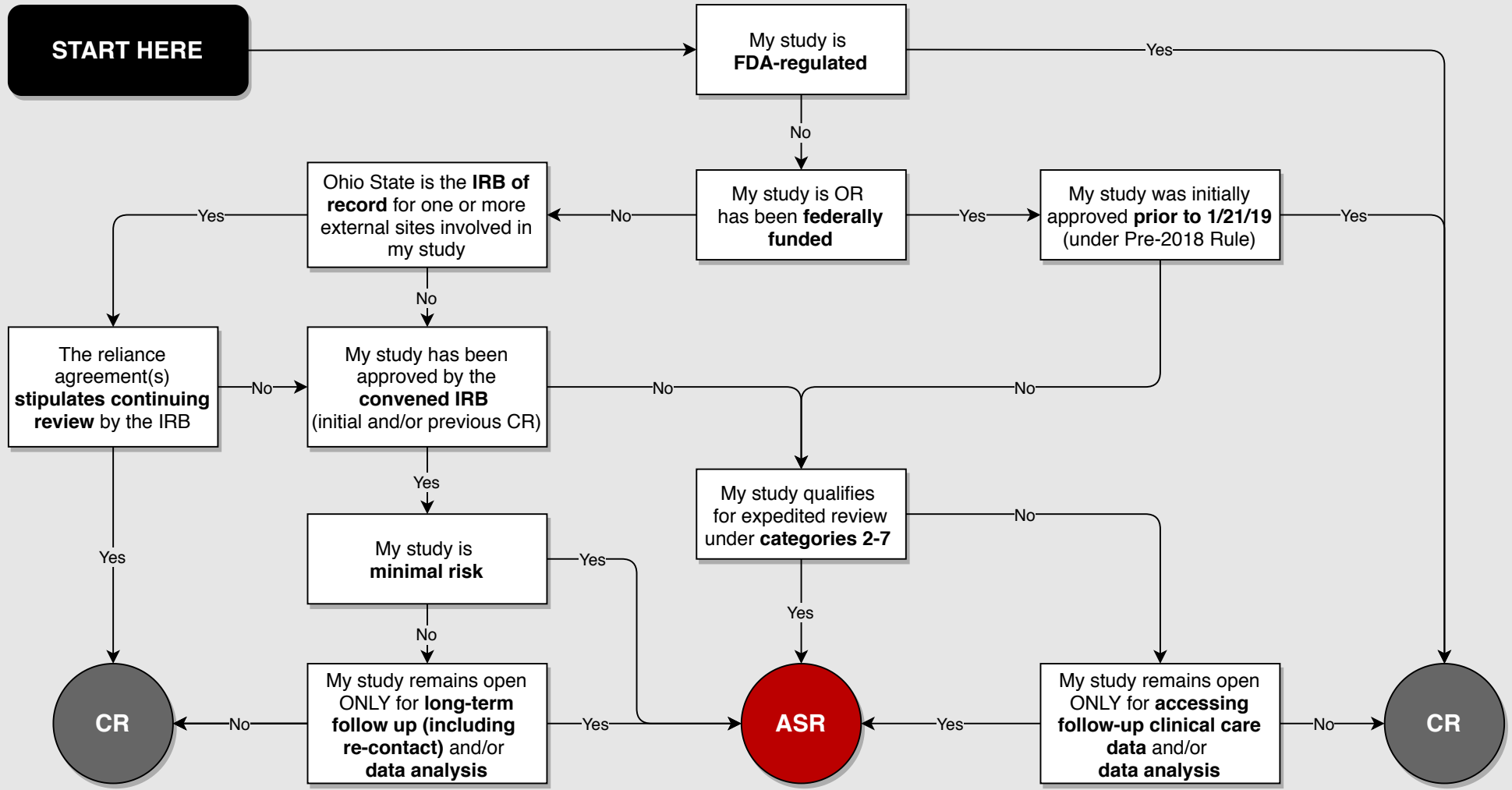


TIP SHEET: ANNUAL REVIEW DECISION TREE

Use this chart to determine if an IRB-approved study qualifies for an abbreviated annual status report (ASR) or requires continuing review (CR)



Notes: Researchers should use the decision tree each year, as amendments approved since the last IRB review or ASR may affect annual status report eligibility. The IRB may, at its discretion, require continuing review of studies that would otherwise qualify for an annual status report.